

MVSD Series

Solenoid Valve



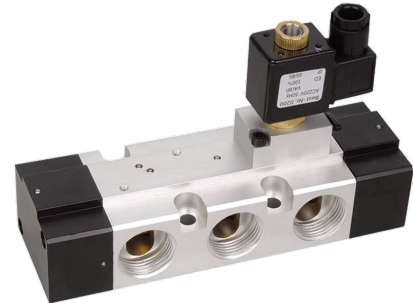
We make the difference



MVSD-260-4E1



MVSD-300-4E1



MVSD-600-4E1

- Valve
- DJF
- JELMP
- JELP/G
- MCS
- 4V100
- 4V200
- 4V300
- 4V400
- Manifold
- SV
- 3V1
- JEL
- 3VJZF
- 4VJZF
- MVSD**
- VF, VZ
- BM
- Diaphragm
- Coil
- 2V
- 2W
- 2W(Big)
- 2P
- 2L
- VL
- PU
- PU225
- 2Q
- JEL5404
- JEL6213
- BU
- Pulse
- JELJZF
- 4H
- TSV
- MPV
- 4HV
- HV, K
- 4R
- FV
- MSV
- JM
- ASC, RE
- QE, QEA
- ST
- HSV

Ordering Code

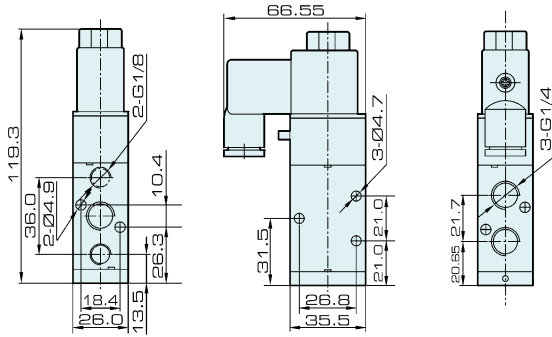
MVSD	260	4	E2	AC110V	W	F
Code	Body Width	4:5 Way	Stop Type	Standard Voltage	Wiring	Joint
	260: 26 mm 300: 30 mm 600: 68 mm		E1: Single coil E2: Double coil	DC12V DC24V AC24V 50Hz/60Hz AC110V 50Hz/60Hz AC220V 50Hz/60Hz AC380V 50Hz/60Hz	Blank: Without light terminal LD: Brown with light terminal LD1: White with light terminal W: Lead wire	1 F-20 F

Specification

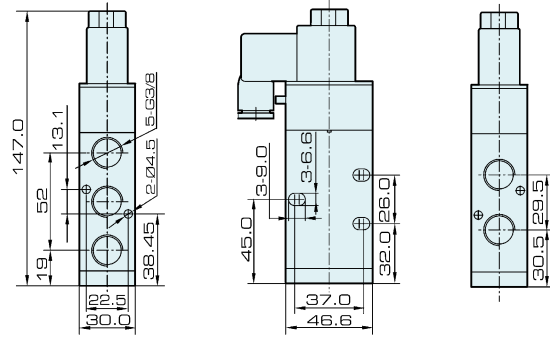
Item	MVSD-260-4E1	MVSD-260-4E2	MVSD-260-4E2 (C.P.E)	MVSD-300-4E1	MVSD-300-4E2	MVSD-300-4E2 (C.P.E)	MVSD-600-4E1	MVSD-600-4E2
No. of Position	2	2	3	2	2	3	2	
No. of Port	5			3	5		5	
Port Size	G 1/4"			G 3/8"			G 3/4"	G 1"
Working medium	Air							
Working Pressure	0.2 ~ 0.7 MPa	0.3 ~ 0.7 MPa		0.2 ~ 0.7 MPa	0.3 ~ 0.7 MPa		0.2 ~ 0.7 MPa	
Max. Test Pressure	10 kgf/cm ²							
Effective Cross Section Area	18 mm ²	16 mm ²		35 mm ²		25 mm ²	20: 115 mm ² 25: 135 mm ²	
Ambient Temperature	-5 ~ 50°C (No Freezing)							
Power Consumption	AC: 5.5 VA			DC: 4.8 W			AC: 13 VA	DC: 10 W
Operating Voltage Tolerance	± 10%							
Insulation Class	IP 65, F Class							

Overall Dimension

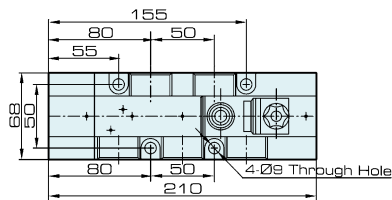
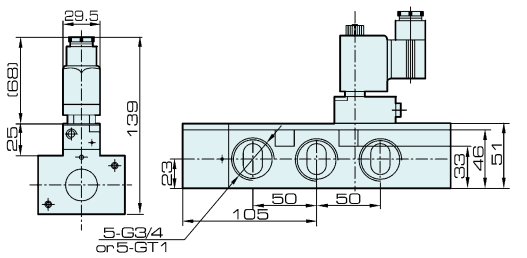
MVSD260-4E1



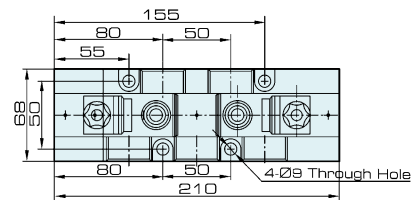
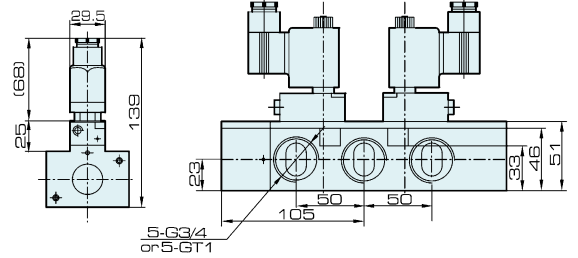
MVSD300-4E1



MVSD600-4E1



MVSD600-4E2



Valve

- DJF
- JELMP
- JELP/G
- MCS
- 4V100
- 4V200
- 4V300
- 4V400
- Manifold
- SV
- 3V1
- JEL
- 3VJZF
- 4VJZF
- MVSD**
- VF, VZ
- BM
- Diaphragm
- Coil
- 2V
- 2W
- 2W(Big)
- 2P
- 2L
- VX
- PU
- PU225
- 2Q
- JEL5404
- JEL6213
- BU
- Pulse
- JELJZF
- 4H
- TSV
- MPV
- 4HV
- HV, K
- 4R
- FV
- MSV
- JM
- ASC, RE
- QE, QEA
- ST
- HSV