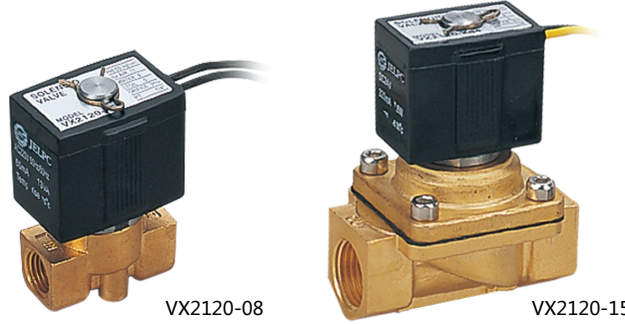


CE
ISO9001:2008

VX Series

2/2 Way Solenoid Valve (Direct Operated)



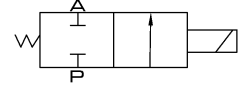
VX2120-08

VX2120-15

Ordering Code

VX2120	08	AC220V
Specification	Orifice Size	Standard Voltage
	06: 1/8"	DC12V DC24V
	08: 1/4"	AC24V 50Hz/60Hz
	10: 3/8"	AC110V 50Hz/60Hz
	15: 1/2"	AC220V 50Hz/60Hz AC380V 50Hz/60Hz

Symbol

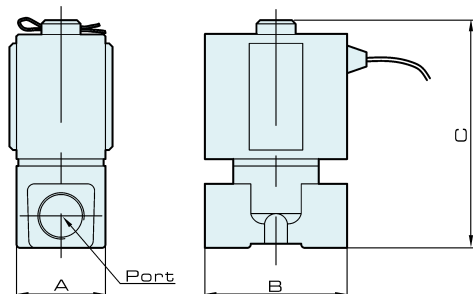


Specification

Model	VX2120-06	VX2120-08	VX2120-10	VX2120-15
Working Medium	Air, Water, Steam			
Operation	Direct			
Type	Normal Close			
Max. Test Pressure	1.05 MPa			
Working-pressure	0 ~ 1.0 MPa			
Orifice	3 mm		13 mm	
Port Size	1/8"	1/4"	3/8"	1/2"
Max. Ambient Temperature	-5 ~ 150 °C		-5 ~ 80 °C	
Material of Oil Seal	VITON		NBR	

Overall Dimension

VX



Dimension

Model	Bore	A	B	C
VX 2120-06	1/8	25	40	64
VX 2120-08	1/4	25	40	64
VX 2120-10	3/8	48	68	110
VX 2120-15	1/2	48	68	110

Valve

- DJF
- JELMP
- JELP/G
- MCS
- 4V100
- 4V200
- 4V300
- 4V400
- Manifold
- SV
- 3V1
- JEL
- 3VJZF
- 4VJZF
- MVSD
- VF, VZ
- BM
- Diaphragm
- Coil
- 2V
- 2W
- 2W(Big)
- 2P
- 2L
- VX**
- PU
- PU225
- 2Q
- JEL5404
- JEL6213
- BU
- Pulse
- JELJZF
- 4H
- TSV
- MPV
- 4HV
- HV, K
- 4R
- FV
- MSV
- JM
- ASC, RE
- QE, QEA
- ST
- HSV