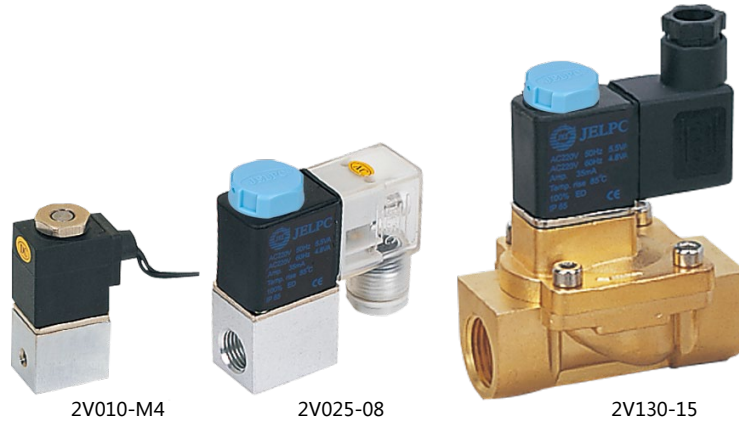


CE
ISO9001:2008

2V Series

2/2 Way Solenoid Valve



2V010-M4

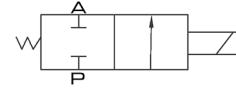
2V025-08

2V130-15

Ordering Code

2V	025	06	AC110V	V
Specification	Orifice size	Port size	Standard Voltage	Sealing
2V: 2/2 way	010: 1.0 mm 025: 2.5 mm 130: 13 mm 250: 25 mm	M4: M 4×0.7 06: 1/8" 08: 1/4" 10: 3/8" 15: 1/2" 20: 3/4" 25: 1"	DC12V DC24V AC24V 50Hz/60Hz AC110V 5 Hz/60Hz AC220V 50Hz/60Hz AC380V 50Hz/60Hz	Blank: NBR V: Viton (for high temperature gas)

Symbol



Specification

Model	2V010-M4	2V025-06	2V025-08	2V130-10	2V130-15	2V250-20	2V250-25
Working Medium	Air, Water, Oil						
Operation	Direct			Internal piloted			
Type	Normal Close						
Orifice	1.0 mm	2.5 mm		13 mm		25 mm	
CV Value	0.04	0.23		6.2		23	
Port Size	M 4 × 0.7	1/8"	1/4"	3/8"	1/2"	3/4"	1"
Operation Fluid Viscosity	Below 20 CST						
Working-pressure	0.05 ~ 0.7 MPa						
Max. Test Pressure	1.2	1.6		1.0			
Max. Ambient Temperature	-10 ~ 80						
Operating Voltage Tolerance	± 10%						
Protect Class	IP 65						
Power Consumption	AC: 6.5 VA DC: 6.5 W						
Insulation	F Class						
Material of Body	Aluminum or Brass (Nickel Plated)			Brass			
Material of Oil Seal	NBR Or VITON			NBR Or VITON			
Response Time	0.05 Sec.						

Valve
DJF
JELMP
JELP/G
MCS
4V100
4V200
4V300
4V400
Manifold
SV
3V1
JEL
3VJZF
4VJZF
MVSD
VF, VZ
BM
Diaphragm
Coil
2V
2W
2W(Big)
2P
2L
VX
PU
PU225
2Q
JEL5404
JEL6213
BU
Pulse
JELJZF
4H
TSV
MPV
4HV
HV, K
4R
FV
MSV
JM
ASC, RE
QE, QEA
ST
HSV

2V Series

2/2 Way Solenoid Valve

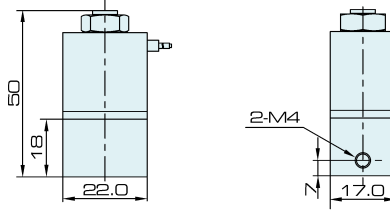


We make the difference

- Valve
- DJF
- JELMP
- JELP/G
- MCS
- 4V100
- 4V200
- 4V300
- 4V400
- Manifold
- SV
- 3V1
- JEL
- 3VJZF
- 4VJZF
- MVSD
- VF, VZ
- BM
- Diaphragm
- Coil
- 2V**
- 2W
- 2W(Big)
- 2P
- 2L
- VX
- PU
- PU225
- 2Q
- JEL5404
- JEL6213
- BU
- Pulse
- JELJZF
- 4H
- TSV
- MPV
- 4HV
- HV, K
- 4R
- FV
- MSV
- JM
- ASC, RE
- QE, QEA
- ST
- HSV

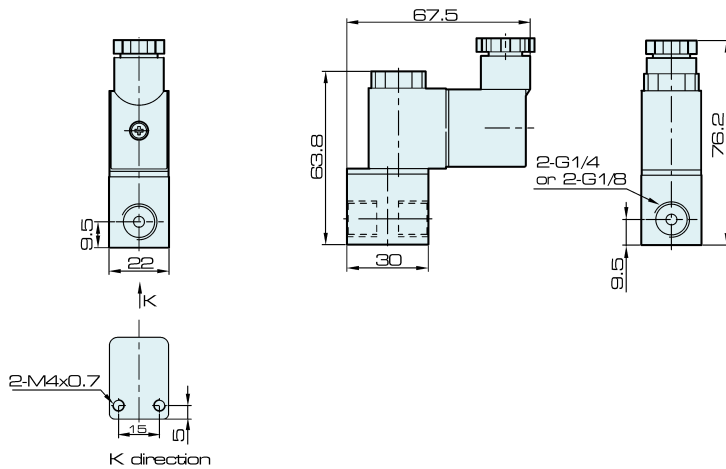
Overall Dimension

2V010-M4



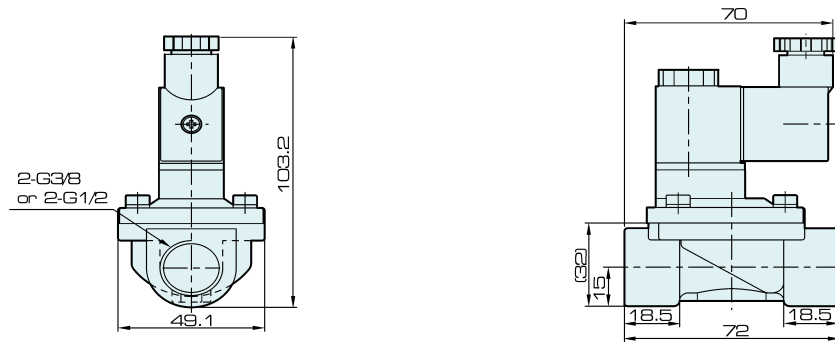
2V025-06

2V025-08



2V130-10

2V130-15



2V250-20

2V250-25

