

GC Series

Air Source Treatment (3 or 2 Combination)



We make the difference



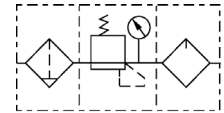
- FRL
- JC
- FE
- GC**
- ZYR10
- MAR300LK
- AC, BC
- AFC, BFC
- AF, BF
- AR, BR
- AFR, BFR
- AL, BL
- JAC
- JAF
- JAR
- JAW
- JAL
- PTH
- JAD

Ordering Code

Code	Series	Port Size	Drain	Pressure Gauge	Scale	Filter Accuracy	Thread
GC: 3 Combination	200 Series	06 : PT 1/8	Blank: Semi-auto drain	F: Square type	1: MPa	Blank: 40 μ	Blank: PT
GFC: 2 Combination	300 Series	08 : PT 1/4	M: Manual drain	C: Traditional type	2: Psi	W: 5 μ	G: PS
GFR: Filter-regulator combination	400 Series	10 : PT 3/8 15 : PT 1/2	A: Auto drain				T: NPT
GF: Filter							
GR: Regulator							
GL: Lubricator							

*Note: No Auto Drain type is available on GC 200 Series.
 **Note: Max. adjustable pressure is at 0.4 MPa on Low pressure type.

Symbol

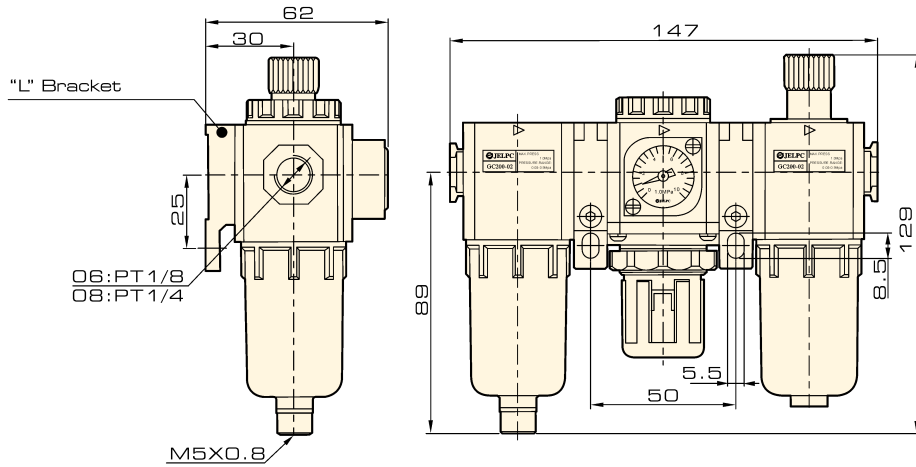


Specification

Model	GC200-06	GC200-08	GC300-08	GC300-10	GC300-15	GC400-10	GC400-15	
Working medium	Air							
Port Size	PT 1/8	PT 1/4	PT 1/4	PT 3/8	PT 1/2	PT 3/8	PT 1/2	
Filtration	40 μ or 5 μ							
Adjustable pressure range	0.15 ~ 0.9 MPa							
Maximum working pressure	1.0 MPa							
Proof Pressure	1.5 MPa							
Operating Temperature Range	5 ~ 60 °C							
Capacity of Filter Cup	10 CC		40 CC			80 CC		
Capacity of Oil Cup	25 CC		75 CC			160 CC		
Recommended Lubrication	ISO VG 32 or Same Grade							
Weight	580 g		1300 g			2358 g		
Components	Filter	GF 200-06	GF 200-08	GF 300-08	GF 300-10	GF 300-15	GF 400-10	GF 400-15
	Regulator	GR 200-06	GR 200-08	GR 300-08	GR 300-10	GR 300-15	GR 400-10	GR 400-15
	Lubricator	GL 200-06	GL 200-08	GL 300-08	GL 300-10	GL 300-15	GL 400-10	GL 400-15

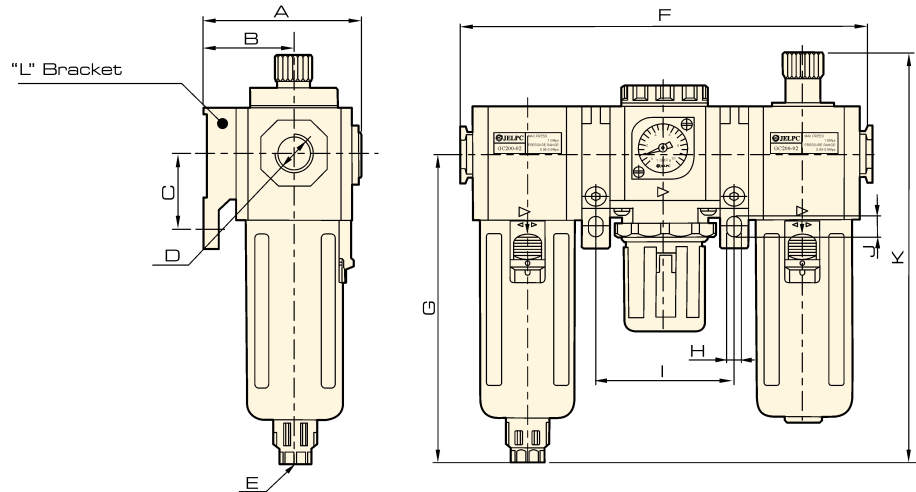
Overall Dimension

GC 200



GC 300

GC 400



Dimension

Model / Symbol	A	B	C	D	E	F	G	H	I	J	K
GC300-08	71	41.5	35	PT 1/4	PS 1/8	188	143	6.5	64	9	188
GC300-10	71	41.5	35	PT 3/8	PS 1/8	188	143	6.5	64	9	188
GC300-15	71	41.5	35	PT 1/2	PS 1/8	188	143	6.5	64	9	188
GC400-10	85.5	50	40	PT 3/8	PS 1/4	248	166.5	8.6	84	12	216
GC400-15	85.5	50	40	PT 1/2	PS 1/4	248	166.8	8.6	84	12	216

FRL

JC

FE

GC

ZYR10

MAR300LK

AC, BC

AFC, BFC

AF, BF

AR, BR

AFR, BFR

AL, BL

JAC

JAF

JAR

JAW

JAL

PTH

JAD