

AFC, BFC Series

Two-point Combination
(FR.L. Combination)



We make the difference

- FRL
- JC
- FE
- GC
- ZYR10
- AFC, BFC**
- AC, BC
- AFC, BFC
- AF, BF
- AR, BR
- AFR, BFR
- AL, BL
- JAC
- JAF
- JAR
- JAW
- JAL
- PTH
- JAD



AFC2000





AFC2000

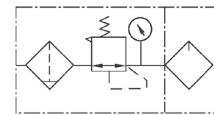


BFC(2000 ~ 4000)

Ordering Code

BFC	3000	D
Model	Port size	Drain Type
AFC: Small 	1500: G1/8" 2000: G1/4" 3000: G3/8"	Blank: Semi-automatic D: Automatic * Not applied to AFC
BFC: Medium 	4000: G1/2"	

Symbol



Specification

Model	AFC1500	AFC2000	BFC2000	BFC3000	BFC4000	
Operating Fluid	Air					
Port Size	G 1/8"	G 1/4"	G 1/4"	G 3/8"	G 1/2"	
Filter Precision	40 μ					
Range of Adjustable Pressure	0.05 ~ 0.85 MPa					
Max. Adjustable Pressure	0.95 MPa					
Proof Pressure Resistance	1.5 MPa					
Operating Temperature Range	5 ~ 60 °C					
Capacity of Filter Cup	15 cc		60 cc			
Capacity of oil Cup	25 cc		90 cc			
Recommended Lubricant	ISO VG 32 or Same Grade Oil					
Weight	0.5 KG		0.7 KG			
Material	Body Aluminum Alloy Die-casting Forming					
	Container Cup PC					
	Protective Cover -					
Components	Filter Regulator	AFR1500	AFR2000	BFR2000	BFR3000	BFR4000
	Lubricator	AL1500	AL2000	BL2000	BL3000	BL4000