

CE  
ISO9001:2008

# AC, BC Series

Three-point Combination  
(F.R.L. Combination)



AC2000





AC2000

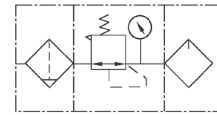


BC(2000 ~ 4000)

## Ordering Code

BC	3000	D
Model	Port size	Drain Type
AC: Small 	1500: G 1/8" 2000: G 1/4" 3000: G 3/8"	Blank: Semi-automatic D: Automatic
BC: Medium 	4000: G 1/2"	* Not applied to AC

## Symbol



## Specification

Model	AC1500	AC2000	BC2000	BC3000	BC4000	
Operating Fluid	Air					
Port Size	G 1/8"	G 1/4"	G 1/4"	G 3/8"	G 1/2"	
Filter Precision	40 μ					
Range of Adjustable Pressure	0.05 ~ 0.85 MPa					
Max. Adjustable Pressure	0.95 MPa					
Proof Pressure Resistance	1.5 MPa					
Operating Temperature Range	5 ~ 60 °C					
Capacity of Filter Cup	15 cc		60 cc			
Capacity of oil Cup	25 cc		90 cc			
Recommended Lubricant	ISO VG 32 or Same Grade Oil					
Weight	0.7 KG		0.9 KG			
Material	Body Aluminum Alloy Die-casting Forming					
	Container Cup PC					
	Protective Cover -					
Components	Filter Regulator	AF1500	AF2000	BF2000	BF3000	BF4000
	Regulator	AR1500	AR2000	BR2000	BR3000	BR4000
	Lubricator	AL1500	AL2000	BL2000	BL3000	BL4000

FRL  
JC  
FE  
GC  
ZYR10  
MAR300K  
AC, BC  
AFC, BFC  
AF, BF  
AR, BR  
AFR, BFR  
AL, BL  
JAC  
JAF  
JAR  
JAW  
JAL  
PTH  
JAD