

# JAR Series

## 1000~5000 Regulator



We make the difference

- FRL
- JC
- FE
- GC
- ZYR10
- MAR300LK
- AC, BC
- AFC, BFC
- AF, BF
- AR, BR
- AFR, BFR
- AL, BL
- JAC
- JAF
- JAR**
- JAW
- JAL
- PTH
- JAD





JAR2000

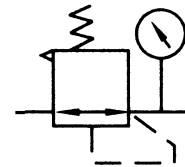


JAR4000

### Ordering Code

JA	R	4000	04	
Series	Function	Specification	Port size	
JAR2000-02	Regulator	1000	M5: M5 x 0.8	
		2000	01: G 1/8"	
		2500	02: G 1/4"	
		JAR3000-03	3000	03: G 3/8"
			4000	04: G 1/2"
5000	06: G 3/4"			
			10: G 1"	

### Symbol



### Specification

Model	JAR1000-M5	JAR2000-01	JAR2000-02	JAR2500-02	JAR2500-03	JAR3000-02	JAR3000-03	JAR4000-03	JAR4000-04	JAR4000-06	JAR5000-06	JAR5000-10
Rated Flow	110	550	550	2000	2000	2500	2500	6000	6000	6000	8000	8000
Port Size	M5	1/8	1/4	1/4	3/8	1/4	3/8	3/8	1/2	3/4	3/4	1
Max. Adjustable Pressure	1.0 MPa											
Proof Pressure Resistance	1.5 MPa											
Range of Adjustable Pressure	5 ~ 60 °C											
Range of Adjustable Pressure	0.05~0.7 MPa					0.05 ~ 0.85 MPa						
Valve Type	With Overflow											