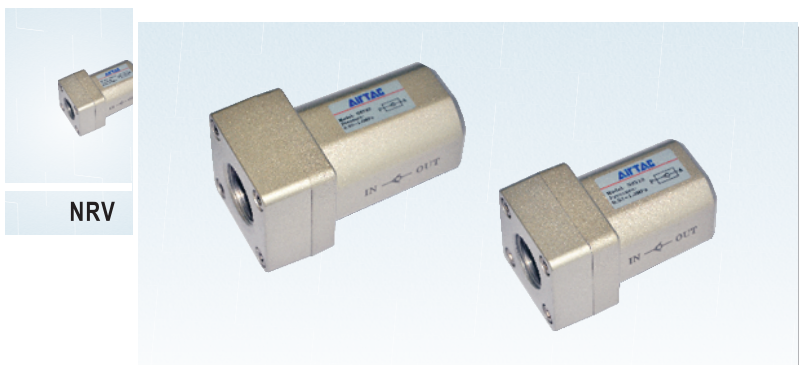


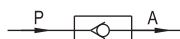
# Non-return valve

## NRV Series



NRV

### Symbol

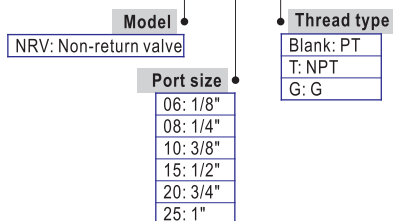


### Product feature

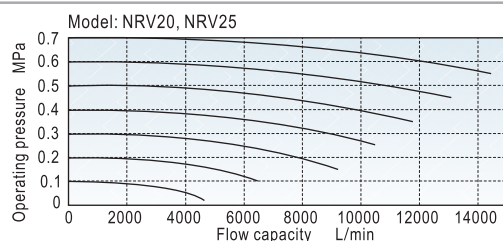
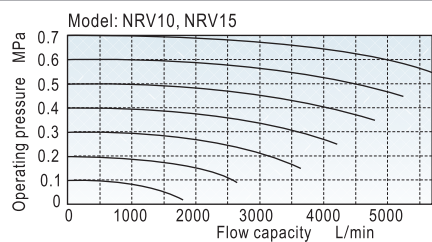
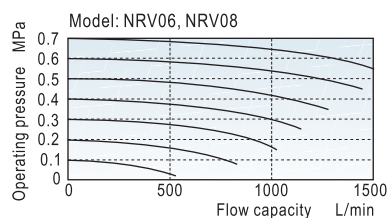
1. There are many port sizes: 1/8", 1/4", 3/8", 1/2", 3/4", 1".
2. It allows the fluid to flow in one direction **ONLY**.
3. It is prevent backflow due to sudden drop in pressure or decrease in air consumption.
4. There is large valid area of section.
5. The spool is made of POM, valve's core sealed with rubber, and it has a compact structure.

### Ordering code

#### NRV 08



### Flow chart



### Specification

Model	NRV06	NRV08	NRV10	NRV15	NRV20	NRV25
Fluid	Air (to be filtered by 40 μm filter element)					
Port size①	1/8"	1/4"	3/8"	1/2"	3/4"	1"
Orifice size mm <sup>2</sup> (Cv valve)	18(1.0)	27(1.5)	60(3.33)	73(4.06)	230(12.78)	260(14.44)
Pressure range	0.02~1.0MPa(2.9~145psi)					
Proof pressure	1.5MPa(215psi)					
Temperature	-20~70°C					
Material body	Aluminum alloy					

Note ①: PT thread, NPT thread and G thread are available.

### Inner structure

NRV06, 08

NRV10, 15, 20, 25

No.	Item	Material
1	Body	Aluminum alloy
2	Spring	Stainless steel
3	Spool	POM
4	End cover	Aluminum alloy
5	Screw	Carbon steel
6	O-ring	NBR
7	Washer	SPCC
8	Gasket washer	NBR/Aluminum alloy+NBR
9	Bumper	NBR

### Dimension

NRV06, 08

NRV10, 15, 20, 25

Model\Item	A	B	C	D	E	F
NRV06	50	25	30	1/8"	-	-
NRV08	50	25	30	1/4"	-	-
NRV10	67	40	-	3/8"	26	33.6
NRV15	67	40	-	1/2"	26	33.6
NRV20	95	52	-	3/4"	31.5	46.7
NRV25	95	52	-	1"	31.5	46.7